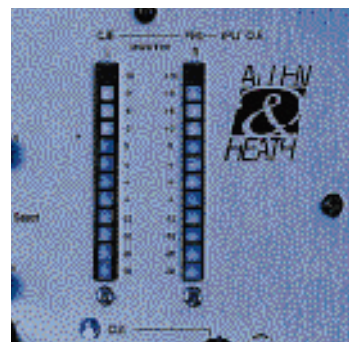
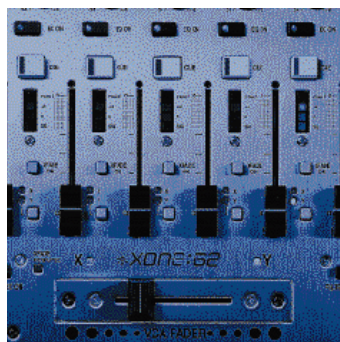
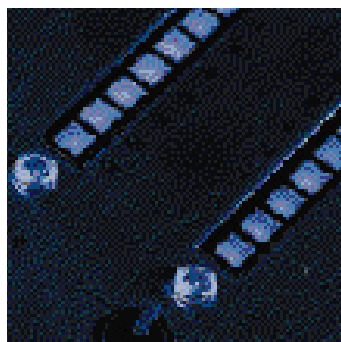
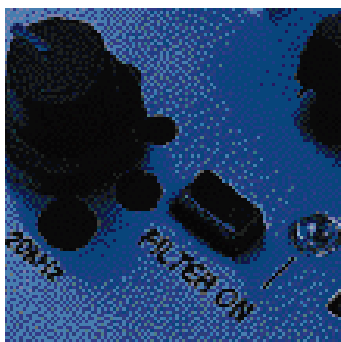
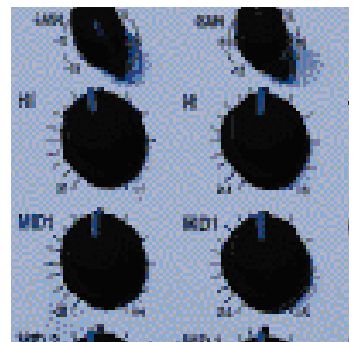
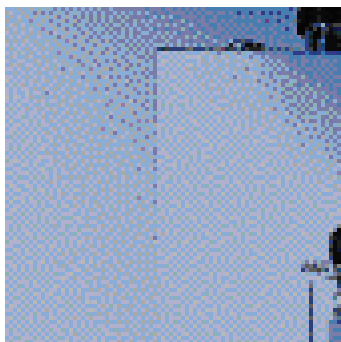
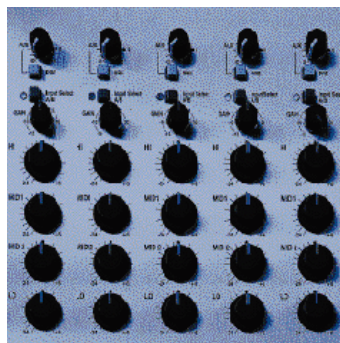
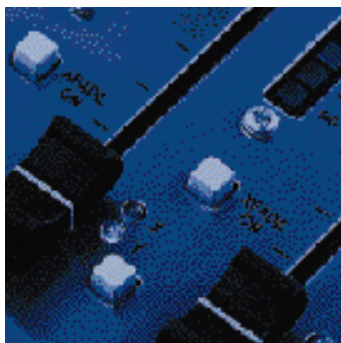


XONE:62

PROFESSIONAL DJ MIXER

- 12 input pro club / DJ mixer
- 4 band EQ
- VCA crossfade
- VCF filters



What can Xone do for you?

The idea behind Xone:62 is beautifully simple: design a desk for people who have owned, broken and got bored of a few mixers already and are looking for something more serious. That meant giving it all the features that the pro's need and using the best components for bombproof build and fantastic audio performance. I also wanted to make Xone fun to use without being gimmicky, so you'll find cool features like VCF filters, extra EQ capability and some other little tricks to keep the most world-weary DJ interested.

Over the last three decades, Allen & Heath has been carving out a reputation for quality and reliability in the pro studio and live sound industries. Of course the club world has its own needs, but I see no reason why we DJ's shouldn't expect the same standards as touring bands or record producers.

Andy Rigby-Jones

Design Engineer (mon-fri) +
Resident DJ (sat-sun)



The Stereo Xone

Xone:62 weighs in with an impressive 6 dual stereo channels, with A and B inputs on each one adding up to a massive 12 stereo inputs. A full range of connectors means that you can use up to 4 turntables, 2 mics, keyboards, samplers, CD players, Minidisks and pretty much anything else that you might want to bring into your mix.

- The more bands of EQ you have, the more creative you can get with your mix - that's why Xone:62 gives you 4 EQ controls rather than the usual 3. The extra band is at 250Hz - this is the ideal frequency for enhancing bass sounds, giving you control of bass quality as well as quantity. Each band has +6dB of boost and a massive -25dB of cut - enough to pump up or kill the selected frequency. EQ in/out switches let you compare your EQ'd sound with the original or cut the EQ in and out as an effect.
- If you use an FX unit, or if you want to provide a zone or other special feed, the mixer has an auxiliary send, with routing and pre/post fade switches on every channel. The crossfade can also be fed to the aux mix via a dedicated knob.
- Xone is designed for immediate, intuitive use in club environments. Colour coded led's show you exactly where the channel is being sent, so you'll never get lost. You also get chunky illuminated Cue switches, a 4 bar signal level meter on every channel (great for beat and level matching) and a top quality 60mm fader.



fig.01 02 03 04



 **XONE:62**
PROFESSIONAL DJ MIXER

- 12 input pro club / DJ mixer • 4 band EQ
- VCA crossfade • VCF filters

VCA Crossfade

The 45mm VCA (Voltage Control Amplifier) fader controls a DC voltage, not an audio signal. This means that it can take a huge amount of punishment without the bangs and crackles that inevitably creep in on regular designs.

- The crossfade will normally dip the signal level by 6dB as it is centred - great if you're into seamless beat mixing, giving a constant level as you mix the two tracks. If you're a scratch mixer, you can get a sharper, dipless action by pressing the response switch.
- If you do manage to damage your crossfader, it only takes a couple of minutes to unscrew and replace from the front.
- A crossfade output Balance control positions the mix in the stereo image - another exciting dynamic effect.
- Colour coded X / Y lights by the crossfader show your channel assignments at a glance.

VCF Filters - Classic Synth Sound in a Club Mixer

This killer feature is unique to the Xone series - two stereo, state variable Voltage Control Filters. These are a stable, modern version of the filters you find on classic analogue synths.

- There are switches for Hi-Pass, Band Pass and Low pass filters. Pressing multiple switches gives you other effects, e.g. a notch filter.
- A resonance knob changes the 'Q' or sharpness of the filter effect from subtle to extreme.
- All controls can be used live, so you can sweep the filters or just set and forget.
- Each VCF has an in/out switch with blue led and can be toggled for extra impact.

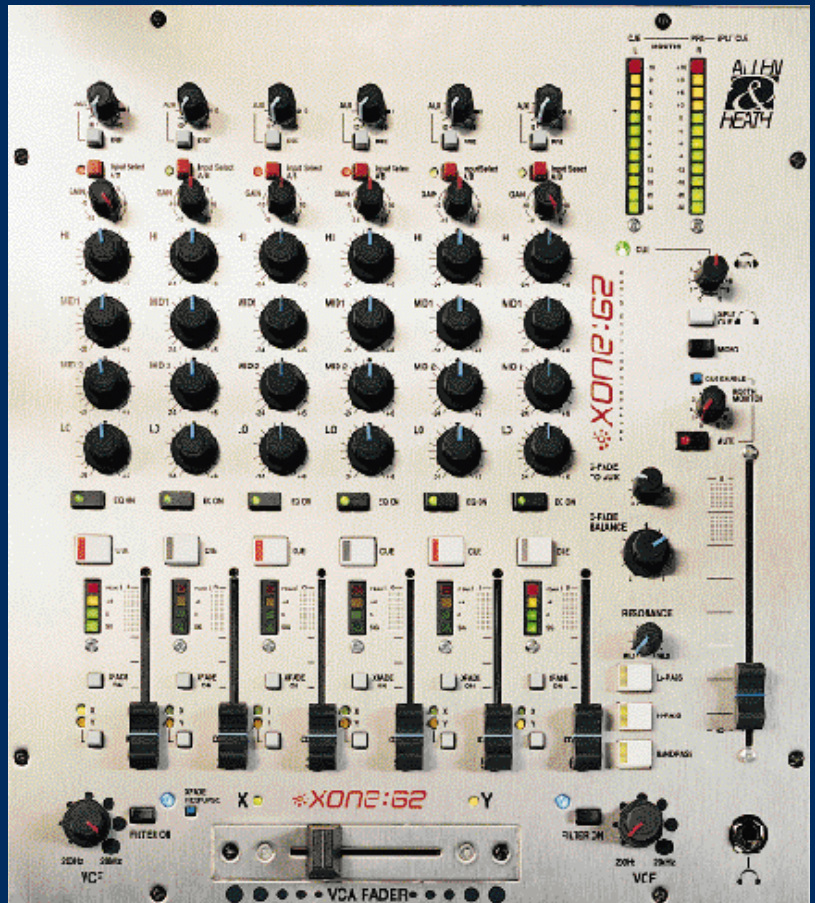


fig.05

6 Dual Stereo Inputs

- RIAA preamps for turntables on 4 inputs
- Aux send (switchable pre/post fade)
- Input selector switch with 2 colour led
- Gain control
- 4 band, fixed frequency EQ with in/out switch
- Large, illuminating Cue switch
- 4 segment led meter
- Xfade On switch
- Routing switch to X or Y crossfade with led indication
- 60mm fader



fig.06 ⁰⁷

The Master Xone

To be in control, you need to instantly see and hear everything that's going on. Xone:62 has all the meters, lights and outputs that you need - no compromises.

- **Twin 12 bar led meters give a clear picture of output levels.**
- **The headphone output is extremely powerful - if you've ever had a mixer that's feeble in this area, you'll know how important this is.**
- **A Split Cue feature lets you hear the main mix in one ear and a cue in the other. Pressing this switch also splits the main meters so you see and hear exactly how the track you're cueing works with the one you're playing.**
- **Your booth monitor output can be switched to mono or stereo whichever way you prefer to work. There is also a Mute switch for your monitor, plus an Aux output monitoring facility, perfect for checking a zone feed.**
- **A dedicated recording output following the main mix lets you make high quality mixtapes and demos with ease.**

→
→

→

Side Bars

Build Quality

Xone:62 is built using exactly the same techniques and standards that we apply on our touring desks to give maximum reliability, life-expectancy and resale value.

- The mixer is internally modular - so each channel has its own vertically mounted circuit board for durability and ease of service/modification. Other mixers have a single, flat circuit board with all the controls squashed onto it, which makes them more vulnerable to audio problems and makes them impossible to repair without taking the whole desk out of action.
- We bolt the knobs to the front panel with steel nuts, so the rugged all-metal chassis absorbs any blows, not the electronics. In short, the Xone is a real road warrior.
- Allen & Heath only use high quality components, including ALPS faders and Neutrik pots and connectors.

○
←←
←
←



fig.08⁰⁹

Specifications

0dBu = 0.775 Volts rms +4dBu = 1.23V rms
 0dBV = 1 Volt rms -10dBV = 316mV rms

Console Specifications

Maximum output level	XLR	+26dBu into >2k ohm load
	TRS jack	+21dBu into >2k ohm load
	RCA Phono	+15dBu into >10K ohm load
Internal headroom	Channels	+21dB
	Mix to output	+23dB
Peak indicators	Turn on 5dB before clipping	
Meters	MIX /MONITOR Peak hold 12 LED 3 colour	
	STEREO CHANNEL Peak reading 4 LED 3 colour	
Frequency response	+0/-1dB10Hz to 40kHz	
Distortion	< 0.006% THD+noise measured at +14dBu 1kHz	
Crosstalk	< 90dB Channel shutoff measured at 1kHz	
Noise	Measured rms 22Hz to 22kHz	
MIC EIN	-126dB referred to 150 ohm source	

Residual output noise	XLR	-90dBu (-94dB S/N)
	TRS jack	-84dBu (-84dB S/N)
Mix noise, ch routed	XLR	-87dBu (-90dB S/N)
	TRS jack	-83dBu (-83dB S/N)
	RCA Phono	-91dBu (-91dB S/N)

Power Supply

Internal switch mode power unit with auto sensing mains input.

MAINS IN socket	IEC 3 pin
Power lead	Country dependent with moulded mains plug supplied
AC mains	100 to 240V AC @ 50/60Hz
Consumption	30W max
Mains fuse rating	100-240V AC T500mA 20mm

Dimensions

	Width	Height	Depth
Desktop	320mm (12.6")	357mm (14")	118mm(4.6")
	unpacked	packed	
Weight	4kg	7kg	



Connections

XLR connections are Pin 2 = hot (+) Pin 3 = cold (-) Pin 1 = GND
 TRS input and output connections are Tip = hot/left(+) Ring = cold/right (-) Sleeve = GND

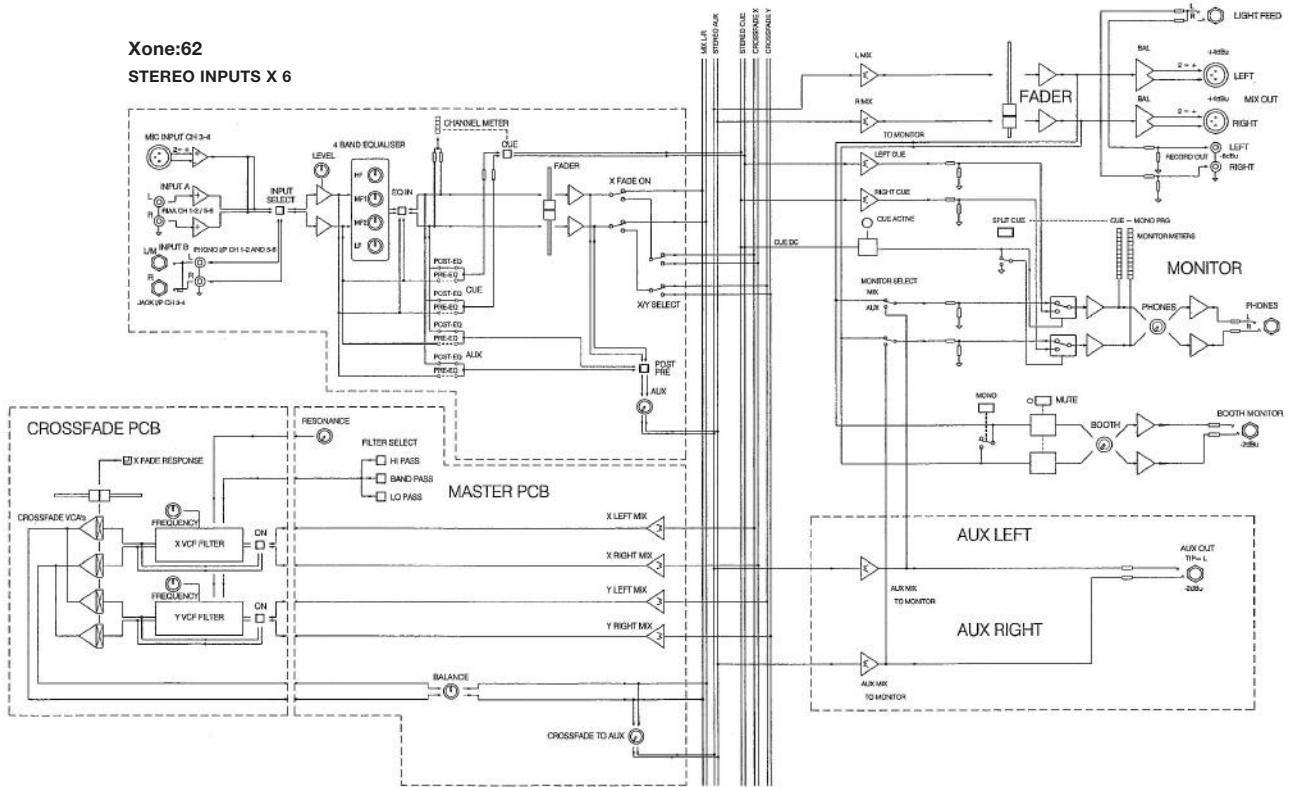
Input Connections

STEREO IN A	RIAA Equalisation		
Ch 1-2/5-6	RCA phono	47k ohm	2 to 100mV
STEREO IN A/B	RCA phono	>15k ohm	-15 to +10dBu
STEREO IN B	Ch 3-4	TRS jack	>15k ohm -15 to +10dBu
MIC IN	BALANCED XLR	<2Kohm	-50 to -20dBu

Output Connections

MIX OUT (XLR)	Balanced XLR male	<75 ohm +4dBu
AUX OUT	TRS jack	<75 ohm -2dBu
RECORD OUT	RCA Phono	340 ohm -10dBV
HEADPHONES	Tip = L Ring = R	30 to 600 ohm recommended

Block Diagram



ALLEN&HEATH

Kernick Industrial Estate,
Penryn, Cornwall TR10 9LU.

T: +44 (0)1326 372070 F: +44 (0)1326 377097
<http://www.allen-heath.com>

Allen & Heath reserve the right to improve or otherwise alter any information supplied in this document or any other documentation supplied hereafter.

A Harman International Company

Photography fig. 01 02 03 04 06 07 08 09 by Morgan Lowndes
design Absolute design

AP3836

