

AFS²

ADVANCED FEEDBACK SUPPRESSION



Hear no evil and see no evil.

dbx
by HARMAN

The simplest way to eradicate feedback

The AFS², new and improved



Input Signal Meters

Accurately monitor input signal levels accurately with five segment LEDs per channel plus red clip LED indicator.

Easy-to-Read Display

Navigate menus, interact with the AFS² Wizard, and easily manipulate settings with the bright, legible, interactive display.

Wizard Functions

The AFS² Feedback Suppression Wizard makes setup easy and approachable for users with varying levels of technical know-how. Select application-specific filter types for Speech, Music Low, Music Medium, and Music High, and the number of fixed or live filters up to a total of 24.

Channel Bypass

Isolate problem channels with the option to bypass Channels 1, 2, or both.



USB Connection

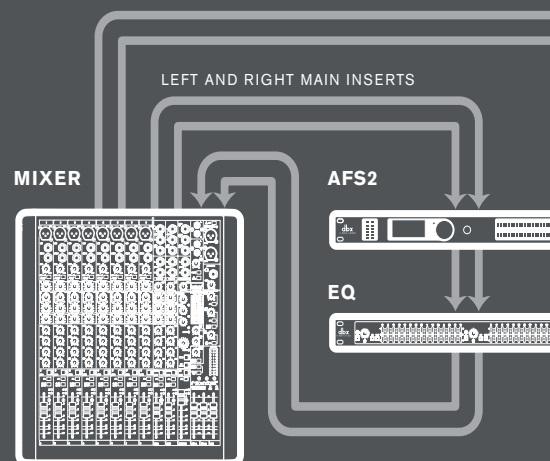
Keep your firmware up-to-date. Visit www.dbxpro.com for the latest firmware updates.

Q: How do you kill feedback without killing frequency response?

A: Extremely narrow-band notch filtering.

Before the human ear even begins to sense it, the **dbx AFS²** hears the feedback creeping up in the signal. It analyzes that feedback in a matter of milliseconds to determine its specific frequency and corrects the output from the PA using very narrow frequency *notches* – i.e., it cuts a very specific range of frequencies from your output signal, so the feedback disappears.

If the range of frequencies cut from the output signal is too wide however, sound quality could be affected. That's why the proprietary Advanced Feedback Suppression algorithms in the **dbx AFS²** cut out only what is needed, in notches as narrow as 1/80th of an octave, ensuring optimal frequency response without the possibility of feedback.



before it starts.
ed.



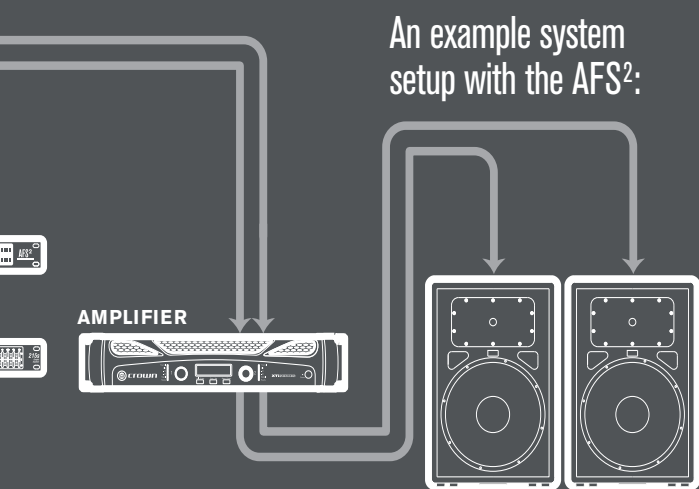
Notch Filter Indicators

Visually monitor the number of notch filters applied on each channel.



XLR and 1/4" TRS Connections

Interface with any professional audio equipment with either connection.



Hear no evil and see no evil.

dbx Professional Products set the standard for excellence in live audio feedback suppression, but dbx engineers — always the consummate and discerning authorities on live sound — saw an opportunity to push the technology further

The completely redesigned **AFS²** now offers a highly-intuitive Wizard function that takes all of the guesswork out of setting up any room, incorporates a completely redesigned Advanced Feedback Suppression module, and — perhaps best of all — now provides the user with a full LCD display for setup and monitoring.

Invest in the **AFS² Advanced Feedback Suppression** processor from dbx to protect your ears and your audio equipment from annoying and potentially damaging audio feedback.

Setup Wizard makes initial set up easy, with AFS settings customized for your specific application and system.



The Wizard function in the AFS² guides you through easy, step-by-step processes to help you get the most from your loudspeaker system. The Wizard will help you determine which application-specific feedback filter type to use and how many fixed or live filters to apply to your signal.

Enhanced AFS™ algorithm for faster, more precise feedback elimination, without adversely affecting your system's tone.



Nothing turns audiences away like annoying and potentially painful audio feedback. Fortunately, dbx engineers have revisited their already-stellar Advanced Feedback Suppression algorithm and made it work even better. The all-new AFS² listens for and anticipates feedback and adjusts frequency output automatically before feedback even has a chance, while never altering your sound.

