

VENUE Mix Rack System

“From day one, working with the [D-Show] console was straightforward and fast... my worship pastor noticed a substantial difference in the clarity of his monitor mix... frankly, it’s simpler [to use] than a small analog desk.”

Dave Younkman Technical director
Irving Bible Church, Irving, TX

The VENUE Mix Rack System takes up even less space than the VENUE Profile System, as it features the all-in-one Mix Rack to handle I/O and processing instead of the tandem FOH Rack and Stage Rack, making the system ideal for smaller live sound applications that don’t require a lot of expansion. The system is further enhanced with the compact Profile console.

Mix Rack provides all I/O, DSP processing, and computer control into a single 11U rack, providing almost the same functionality as FOH Rack and Stage Rack (Mix Rack offers fewer outputs and less DSP), but in half the space. You can choose to integrate Pro Tools|HD or Pro Tools LE recording and playback by installing an HDx or FWx Option Card (requires a separate computer for Pro Tools). And expand the outputs with your choice of analog and/or digital output option cards, or an A-Net output card for integrating Aviom Pro16 Series personal mixers.



Core System

- VENUE Profile console (24 input faders)
- VENUE Mix Rack (includes maximum 48 analog mic/line inputs; 16 analog outputs, expandable to 32; two DSP Mix Engine Cards for processing; local I/O; and computer control)
- ECx Ethernet Option Card (for remote control via a wired or wireless Ethernet device)
- VENUE D-Show software
- VENUEPack sound processing plug-in bundle
- Video monitor and trackball mounting brackets (video monitor and trackball sold separately)
- All necessary cables and accessories

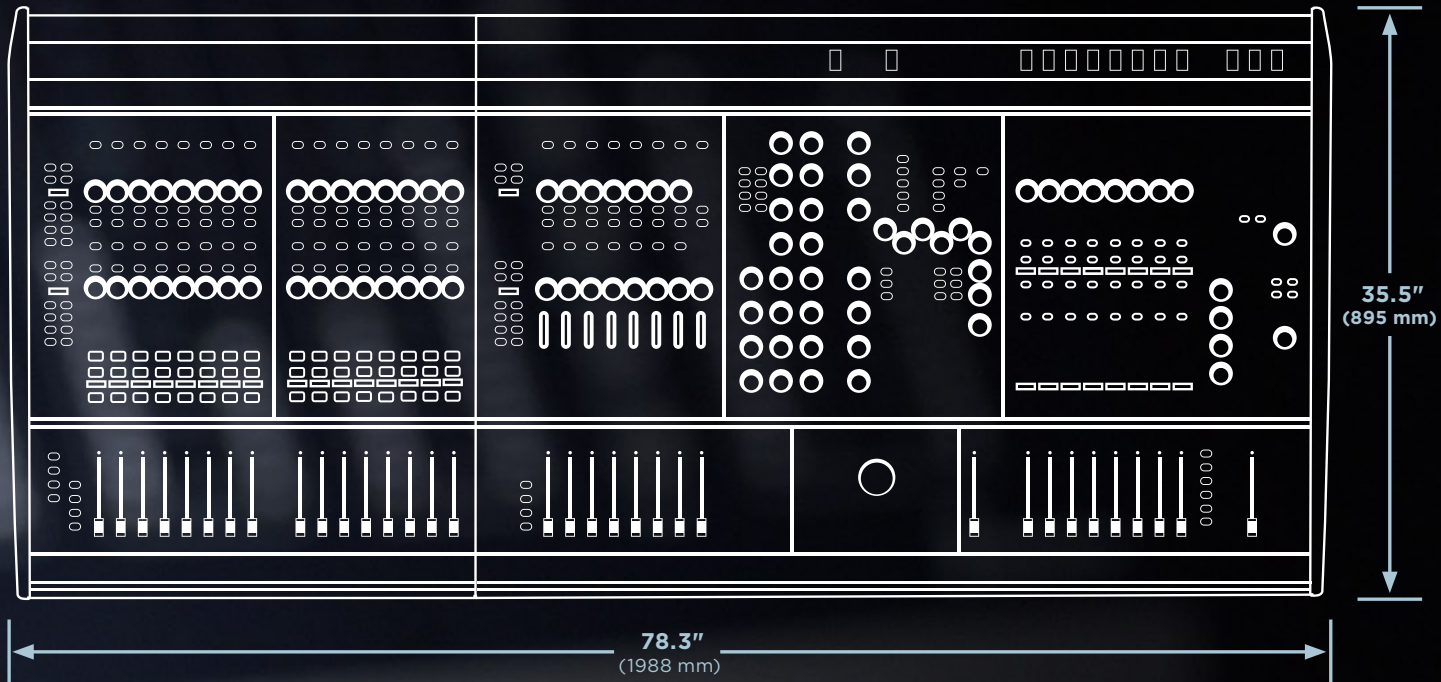
Options

- Expand Mix Rack with up to 32 analog, digital, and/or A-Net outputs
- Install up to three DSP Mix Engine Cards in Mix Rack for maximum processing
- Add Pro Tools|HD or Pro Tools LE recording with an HDx or FWx Option Card, respectively

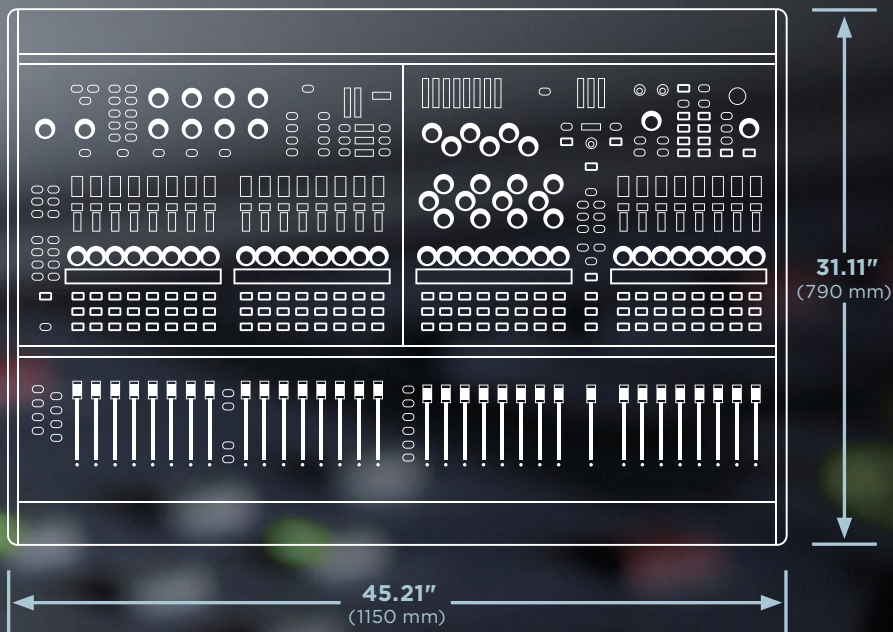
VENUE Systems at a Glance

	VENUE D-Show System	VENUE Profile System	VENUE Mix Rack System	VENUE SC48
Console	D-Show Main unit and one D-Show Sidecar	Profile	Profile	SC48
Input Faders	24 (expandable to 56 with three D-Show Sidecars)	24	24	16
Maximum Recallable Mic Pres	96 (with two Stage Racks)	96 (with two Stage Racks)	48	48
Maximum Input Channels to Mix	128 (96 input channels, plus 16 stereo effects returns)	128 (96 input channels, plus 16 stereo effects returns)	96 (64 input channels, plus 16 stereo effects returns)	64 (48 input channels, plus 8 stereo effects returns)
Maximum Outputs	96 (with two Stage Racks)	96 (with two Stage Racks)	32	32
Auxiliary Sends	24 (including Variable Groups)	24 (including Variable Groups)	24 (including Variable Groups)	16
Maximum Graphic EQs	24	24	24	24
Maximum DSP Mix Engine Cards	5	5	3	2
Pro Tools	Pro Tools HD or Pro Tools LE via option card	Pro Tools HD or Pro Tools LE via option card	Pro Tools HD or Pro Tools LE via option card	Built-in Pro Tools LE

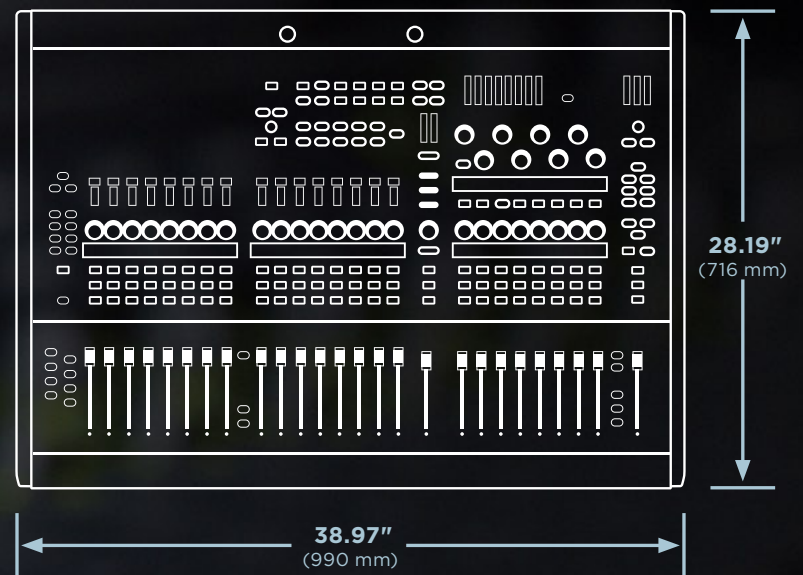
VENUE D-Show Main Unit with attached D-Show Sidecar



VENUE Profile

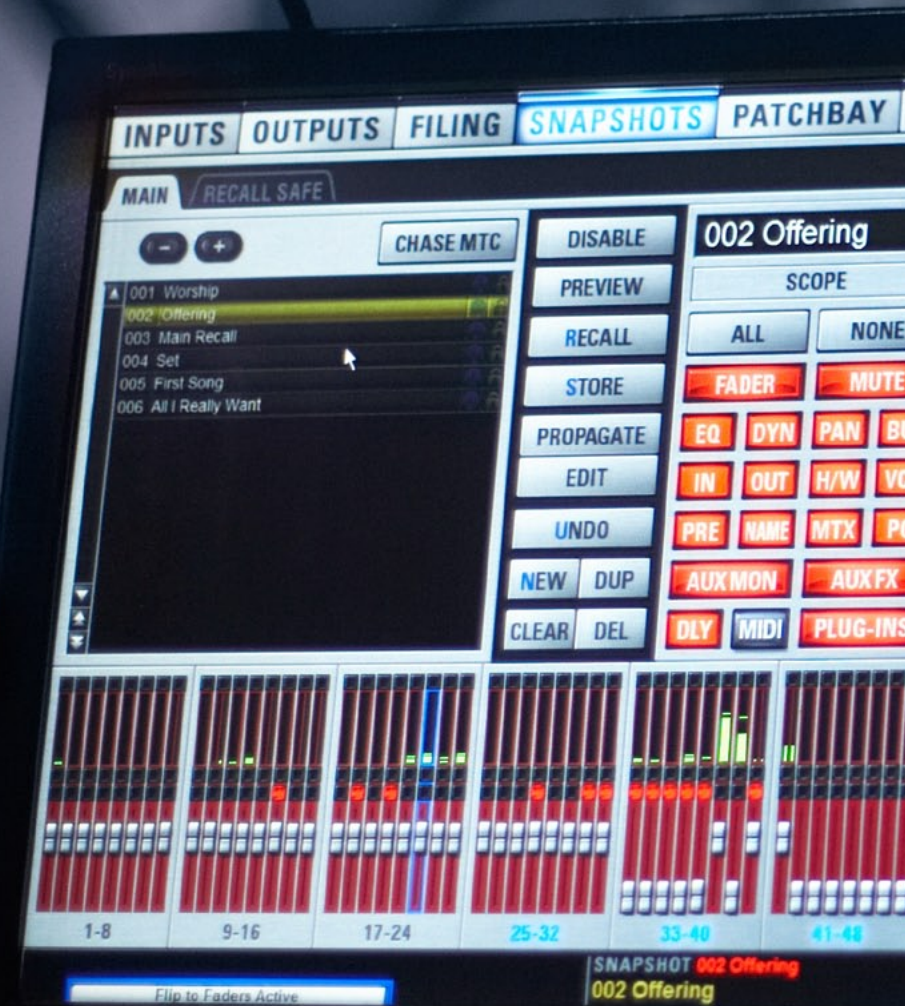


VENUE SC48



VENUE D-Show Software

Comprehensive yet easy to use, VENUE D-Show software is the common software platform across all VENUE systems. This makes moving from system to system easy, as you only need to learn the software once to mix on any VENUE system. Plus, any show file you create on any VENUE system can be saved to a USB key, transported, and loaded onto any other VENUE system for use, no matter the system's size or configuration.





Intuitive Interface

D-Show software serves as mission control of the VENUE system, giving you quick access to features and controls both on the screen, using a trackball or mouse, and directly from the console. The software features a tabbed, non-multi-layered interface and streamlined screen pages that make it easy to access and gain control of the system's inputs, outputs, files, snapshots, digital patchbay, plug-ins, and user options.

Command Over I/O and Routing

Managing and routing all inputs, outputs, sends, and returns is easy using the dedicated Inputs, Outputs, and digital Patchbay pages. The Inputs page is split into two sections; the upper channel view lets you quickly scan the state of all parameters for the selected channel, while the lower faders view lets you reposition faders, route plug-ins, and more. The Outputs page displays similar views, with the upper channel view showing the output bus parameters, including Graphic EQs, and the lower faders offering controls for making output assignments. And the Patchbay page provides access to all inputs, outputs, and external gear, including Pro Tools recording systems, for easy routing.

Complete Plug-in Control

The Plug-ins page gives you fast access to the system's installed audio plug-ins, displaying rows of available slots, which are distributed evenly across four virtual racks. You can assign plug-ins for a given show, route them, dictate the patch order, and make changes to plug-in parameters directly from the console or on the screen. D-Show software also keeps track of the latest plug-in versions, making it easy to see what's currently installed and what needs to be updated.

Powerful Snapshot Automation

Snapshot automation greatly increases mixing efficiency by allowing you to store settings (or "scenes") and recall them at will. D-Show software provides storage and recall access to up to 999 snapshots from the Snapshots page or directly from the console, as well as the ability to drag and drop snapshots to match the set list order, and build and save recall-safe grids.

Streamlined File System

The Filing page gives you access to D-Show software's comprehensive file management system, making it easy to access and manage show files, console settings, and factory and user preset libraries for channel processing and plug-ins. Easily synchronize all show files and settings with, or move files and settings over to, a USB storage key for backup or transfer to another VENUE system. And use the History tab feature to quickly recall a previous console state to undo a change.

Custom Control

The Options page is the nerve center of the VENUE system, letting you customize the system configuration and user preferences for your needs. Choose input counts and bus configurations, enable Pro Tools or a Stage Rack as the input source, and even export detailed system info (including all patches, hardware details, and installed plug-in versions) into a document that can be easily emailed to a systems integrator. You also gain access to the powerful Events list, which frees you from time-consuming tasks or repetitive functions by allowing you to build custom macros to perform functions with a simple button press, footswitch stomp, or fader movement.

D-Show Standalone Software

While D-Show software requires a VENUE system to operate, you can use D-Show Standalone software on any Windows XP-equipped computer (including Macs running Boot Camp or emulation software) to program shows or edit existing show files while offline. You can then simply transfer your work to any VENUE system using a simple USB key, or even send files over email (if delivering detailed system specifications to a client). This special version of D-Show software is a free download, and provides an excellent way for anyone to get familiar with VENUE operation before laying a finger on the console.

Unique Features

Fully Integrated Plug-ins

Audio plug-ins have shaped the way the world hears sound, whether they're used to mix a top-selling album or sweeten a film soundtrack. With VENUE, studio sound moves to the stage. VENUE is the only system to directly support the same high-resolution audio plug-in format used in countless Pro Tools-equipped recording studios—no separate computer or external connections required. Recording artists can experience the same sound that inspired them in the studio on stage, and engineers can easily achieve the same mixes by transferring the plug-in settings used in the recording studio to VENUE via a USB key.

All VENUE systems come with a collection of professional plug-ins to get started, including various compressors, reverbs, delays, and EQs, and many more plug-ins are available from Digidesign and some of the most respected names in pro audio, including McDSP, Eventide, Drawmer, Antares, Sonnox, Crane Song, URS, Waves, TC Electronic, and Serato.

Rock-Solid Reliability

The live environment is tough, unpredictable, and unforgiving, and there's nothing more important than having some assurance that your mixing system will function optimally day after day, week to week. That's why all VENUE systems are built to withstand the rigors of the road and designed to circumvent potential hazards that can occur at any given show. All VENUE components offer redundant power supply units and robust, fully tested software to provide peace of mind. You'll also find redundant snakes with FOH Rack and Stage Rack. And with the industry's first "backup mode" feature, VENUE allows you to continue mixing the show without any audio loss should you ever need to reset the host computer.

Direct Connection to Industry-Standard Pro Tools

VENUE offers the most streamlined, reliable, and economical approach to integrating Pro Tools multitrack recording and playback into a live production environment. With an HDx or FWx Option Card installed, simply connect a computer running Pro Tools HD or Pro Tools LE software to the VENUE system via the card. Record every single input from the stage—up to 128 tracks with Pro Tools|HD or up to 18 tracks with Pro Tools LE—without the need for additional interfaces or splits.

"When you marry VENUE with Pro Tools, you are a recording studio. If you're using VENUE without Pro Tools, you're only using half of the horsepower of the console."

Greg Price Chief sound engineer, front-of-house engineer
Ozzfest, Ozzy Osbourne

“The biggest advantage [of VENUE] is the sheer range of plug-ins available. No other system even comes close. And VENUE runs them all natively. We had racks of great analog gear in here, but really, there would be no way to achieve the same results with conventional gear.”

Steve Bauer System integrator
Fox Theatre, Redwood City, CA

Virtual Soundcheck

With Pro Tools integration, VENUE offers an innovative workflow for sound checking called Virtual Soundcheck, enabling you to use prerecorded tracks from a previous show or rehearsal in place of live inputs. This allows you to fine-tune the mix to the current venue without requiring the presence of the performers. You can EQ the system to the room, set up snapshots and effects settings in preparation for the show, and dial-up all in-ear mixes before the performers get there. And artists in attendance have the opportunity to hear what the mix sounds like in the room instead of on stage, and can work with the engineer to achieve an optimal mix.

Channel Spill

Get quick and easy access to a particular channel within a VCA or Group without having to bank through multiple channel layers to reach it. The new VCA and Group Spill feature temporarily brings channels assigned to a VCA or Group immediately to the top of the console. Simply double-press the Select button on the desired VCA or Group to “spill” the contents across the console’s input faders for fast, convenient access regardless of what fader bank these channels normally appear on.

Complete Compatibility

Because all VENUE systems operate on the same D-Show software platform, you can easily swap out individual VENUE components to re-scale a system for a specific need. Got a VENUE Profile System but need more input faders to handle large-scale productions? Switch out the Profile for a D-Show console and attach up to three D-Show Sidecars for dual engineer operation. Or maybe you’re looking to scale down a VENUE Profile System to do a club tour; switch out the FOH Rack and Stage Rack for a Mix Rack. Not only is it easy to change VENUE hardware configurations, you won’t need to rebuild any show files when you move from system to system, as D-Show software ensures show file compatibility across the product line, no matter the hardware configuration.