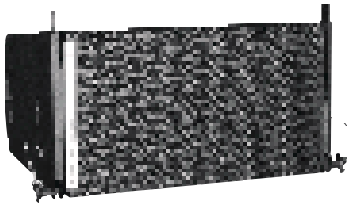


Speakers & Accessories

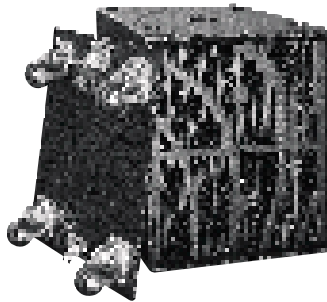
COHEDRA COMPACT™ is a self-contained system comprising precision-matched components and accessories. This compatibility among elements ensures you enjoy COHEDRA™-class sound and handling.

SPEAKERS



CDR 108 C

1 x 8" / 2 x 1" line array mid/high unit with a 100° horizontal angle of radiation. An array composed of CDR 108 C mid/high unit offers the ultimate in natural-sounding dynamic response and greater range. This vast improvement in performance comes courtesy of COHEDRA™ AcousticLens technology, for the 1" drivers true CD horn design, and an 8" midrange speaker boasting a compression chamber. Rigging hardware with quick release pins is fully integrated in the housing, as is a passive crossover with a corner frequency of 800 Hz.



CDR 210 C

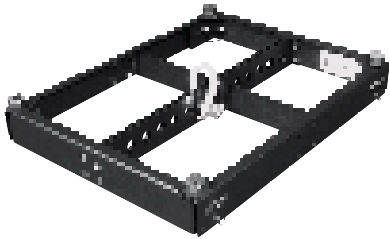
These direct-radiating 2 x 10" subwoofers deliver exceedingly faithful impulse response for powerful and natural-sounding low-end performance. The compact dimensions and integrated rigging hardware afford maximum flexibility for both flown and ground-stacked configurations. The CDR 210 C serves as the base for the CDR 108 C mid/high unit. A special coating protects the loudspeakers against dirt and moisture. A dolly with 80 mm casters and butterfly latches is factory included; a protective cover is optionally available.



Mid/High Case

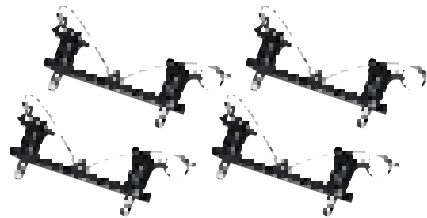
A heavy-duty flight case with the standard loading gauge (W x H x D including casters: 60 x 70 x 80 cm) serves to transport COHEDRA COMPACT™ mid/high units. Each case accommodates four CDR 108 C mid/high units and a standard rigging frame.

ACCESSORIES



COHEDRA COMPACT™ Standard Rigging Frame

The Standard Rigging Frame with 350 kg carrying capacity is designed to fly up to 16 CDR 108 C mid/high units or six CDR 210 C subwoofers, or equivalent combinations of the two. It offers 14 pick points for setting the array's angle of tilt. In ground-stacked configurations, the rigging frame serves as the base for the mid/high units.



COHEDRA COMPACT™ Connector Set

This connector set serves to attach CDR 210 C subwoofers to the standard rigging frame and to secure the cabinets in a ground-stacked array to enhance each stack's stability. A connector set comprises four steel plates with quick release pins.

