

4312/4312B MkII R/L



ACOUSTIC & ELECTRICAL SPECIFICATIONS:

- Nominal Impedance: 6Ω
- Max Amp Power 150 watts*
- Frequency Response 45 Hz – 22 kHz (-6dB)
- Sensitivity: 93dB@2.83 volts/1 meter
- Crossover Frequency: 2000Hz, 5000Hz

SYSTEM COMPONENTS:

- Cabinet 4312/4312B MkII R/L (Not for Sale)
- Grille:
 - Grill (Blk) 61989
 - Grill (Blue) 61989-01
- Low-Frequency Transducer 2213H
 - DC Resistance 5.0 Ω±10%
- Mid-Frequency Transducer 104H-3
 - DC Resistance 4.3 Ω±10%
- High-Frequency Transducer: 4312 MkII – 74856 (052Ti)
4312B MkII – 68669-02 (A035TiA)
 - DC Resistance 3.5 - 3.8 Ω
- Crossover Network 4312 MkII – 332276-001
4312B MkII – 66324-0060

AURAL SWEEP TEST SPECIFICATIONS:

- System Aural Sweep Test 6.0V Input 40 Hz to 22 kHz
- L.F. Aural Sweep Test 5.0V Input 40 Hz to 2.5 kHz
- M.F. Aural Sweep Test 4.0V Input 1 kHz to 6 kHz
- H.F. Aural Sweep Test 2.83V Input 4 kHz to 22 kHz

PHYSICAL SPECIFICATIONS:

- Enclosure dimensions: 23-1/2" x 14-1/4" x 11-3/4" (597mm x 368mm x 298mm)
- Weight 48 lbs (21.7 kg) Each

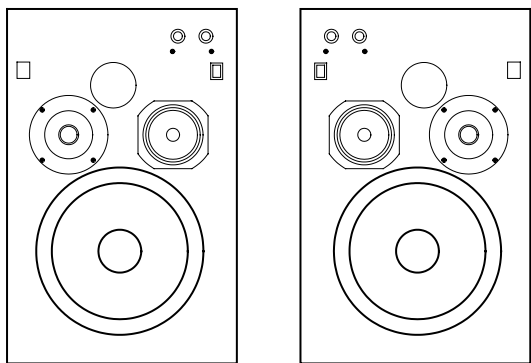
WARRANTY:

- Refer to Warranty Statement packed with each product.

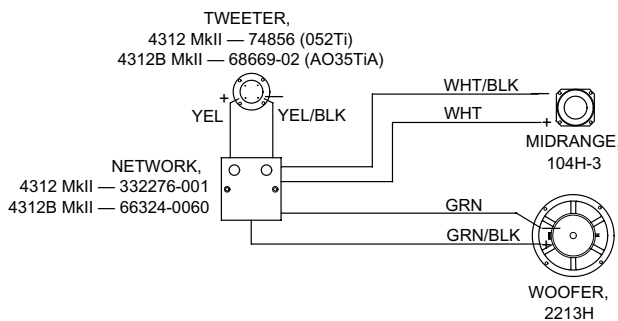
* The maximum recommended amplifier power rating will ensure proper system headroom to allow for occasional peaks. We do not recommend sustained operation at these maximum power levels.

PARTS LIST

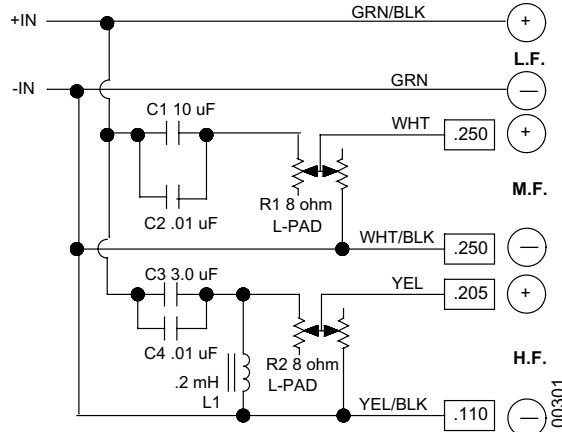
DESCRIPTION	PART NO.
WOOFER GASKET	32756-01
PORT TUBE	52211
GASKET (TWT)	66553
FLOWER POT	76041
OUTER CARTON	332269-001 (Walnut & Dark Grey) 332269-002 (Grey) 334889-001(Black)
WARRANTY CARD	331994-001
END PAD (2)	47218-01
T-NUT (4)	61861
DAMPING PAD	73906
DUAL TERMINAL	323892-001
FACEPLATE (TWT)	68643-02



WIRING DIAGRAM



4312/4312B MkII R/L SCHEMATIC



4312/4312B MkII R/L