

Technical Manual

VT4880 SPECIFICATIONS



ACOUSTIC & ELECTRICAL SPECIFICATIONS:

- Nominal Impedance: 8 ohms Each Transducer
- Power Capacity: 4800W Peak (1200 –2400W Recommended Amplifier Power)
- Frequency Range: 26 Hz – 80 Hz (–10 dB)
- Sensitivity: 98 dB, 1 Watt @ 1 Meter (35 –120 Hz)
- Crossover Frequencies: 100 Hz or Lower

SYSTEM COMPONENTS:

- Cabinet: Enclosure Assembly C4880
- Grille: 338792-001 (Foam Backed)
- Low Frequency Transducer (2) 2258HPL 457mm (18in.) 76.2mm (3 in.) Dual Coil Neodymium Differential Drive
- DC Resistance: 5.2 ohm ±10%

SYSTEM COMPONENTS: (CONT'D)

- Input Conn. Assy. 443288-001

AURAL SWEEP TEST SPECIFICATIONS:

- A. System Aural Sweep Test: 10.0V Input, 20 Hz to 200 Hz
- B. L.F. Aural Sweep Test: 10.0V Input, 20 Hz to 200 Hz

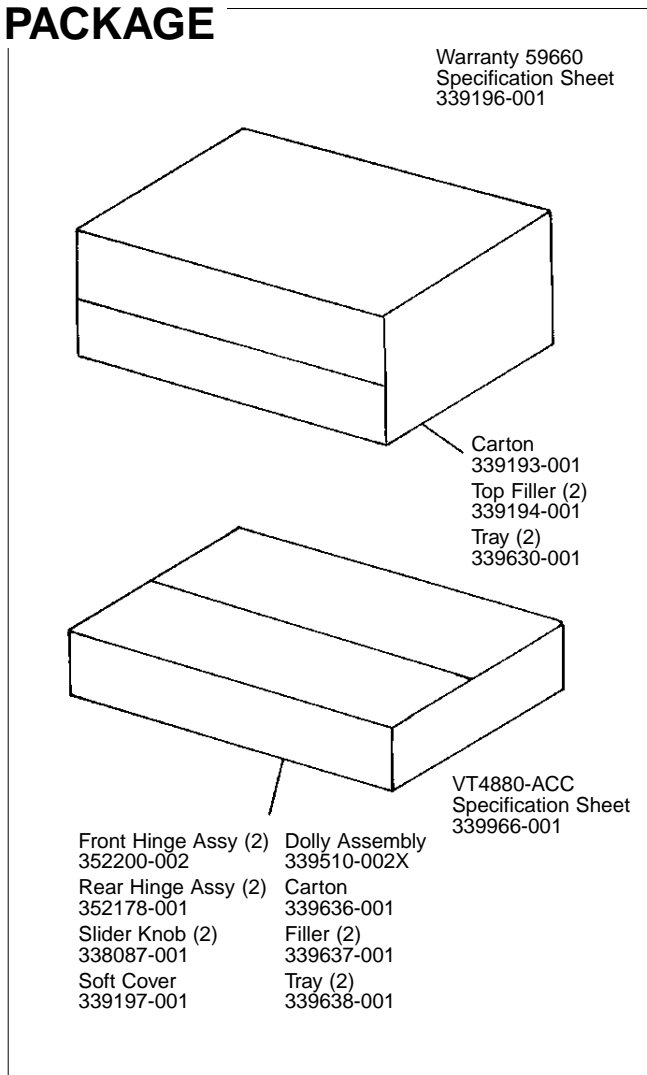
PHYSICAL SPECIFICATIONS:

- Enclosure Dimensions: 493mm x 1229mm x 860mm D (19.42 x 48.38 x 33.85 in.D.)
- Shipping Weight: 151 lbs. (68.5 kg.)

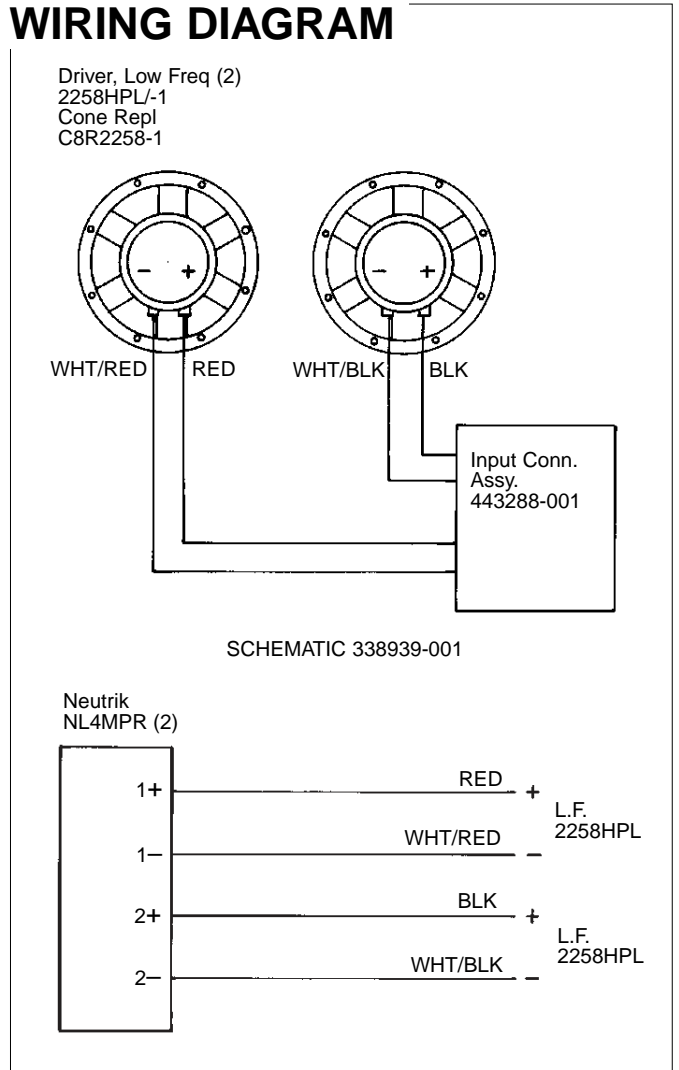
WARRANTY INFORMATION:

- Refer to Warranty Statement packed with each product.

PACKAGE

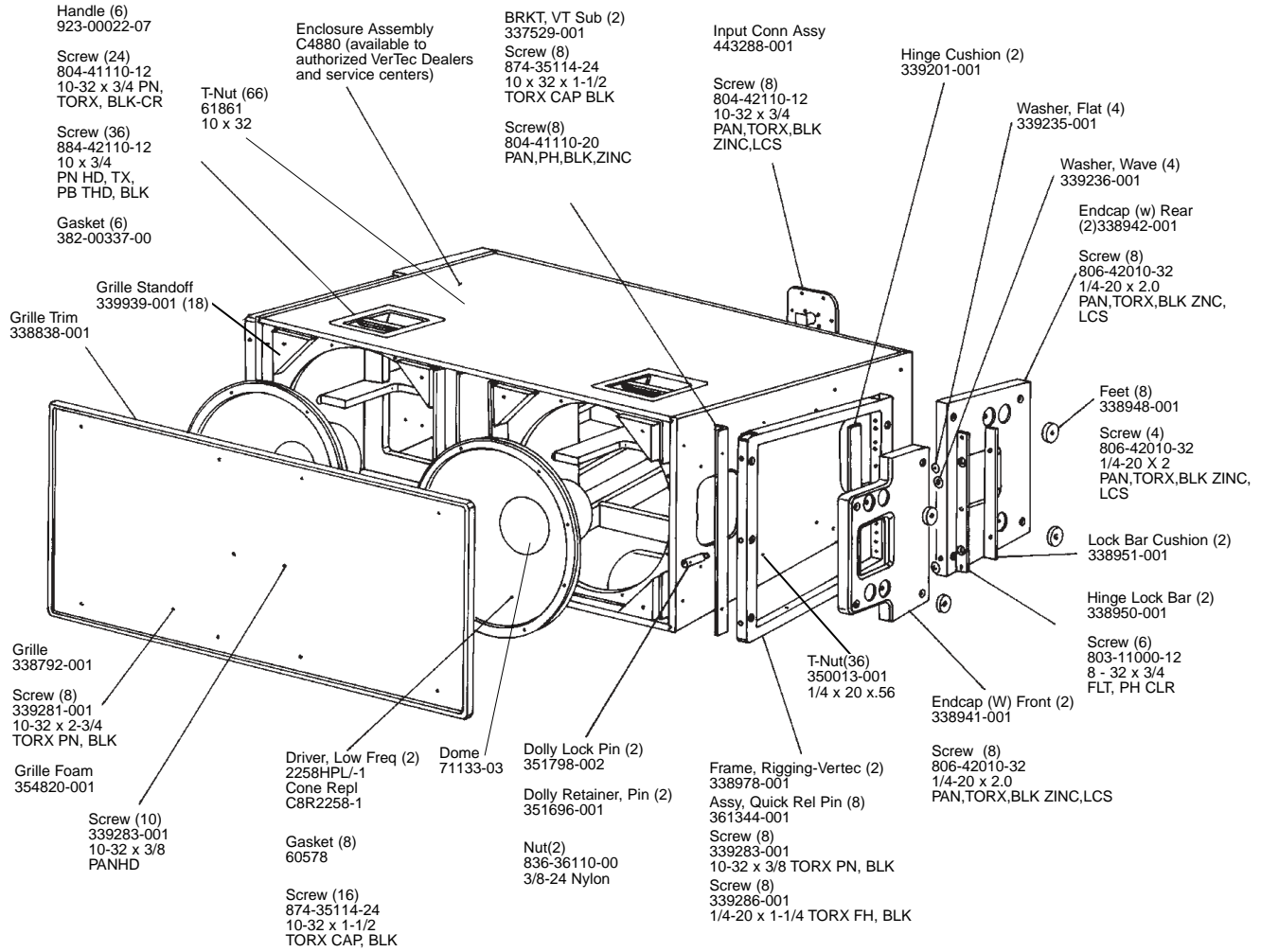


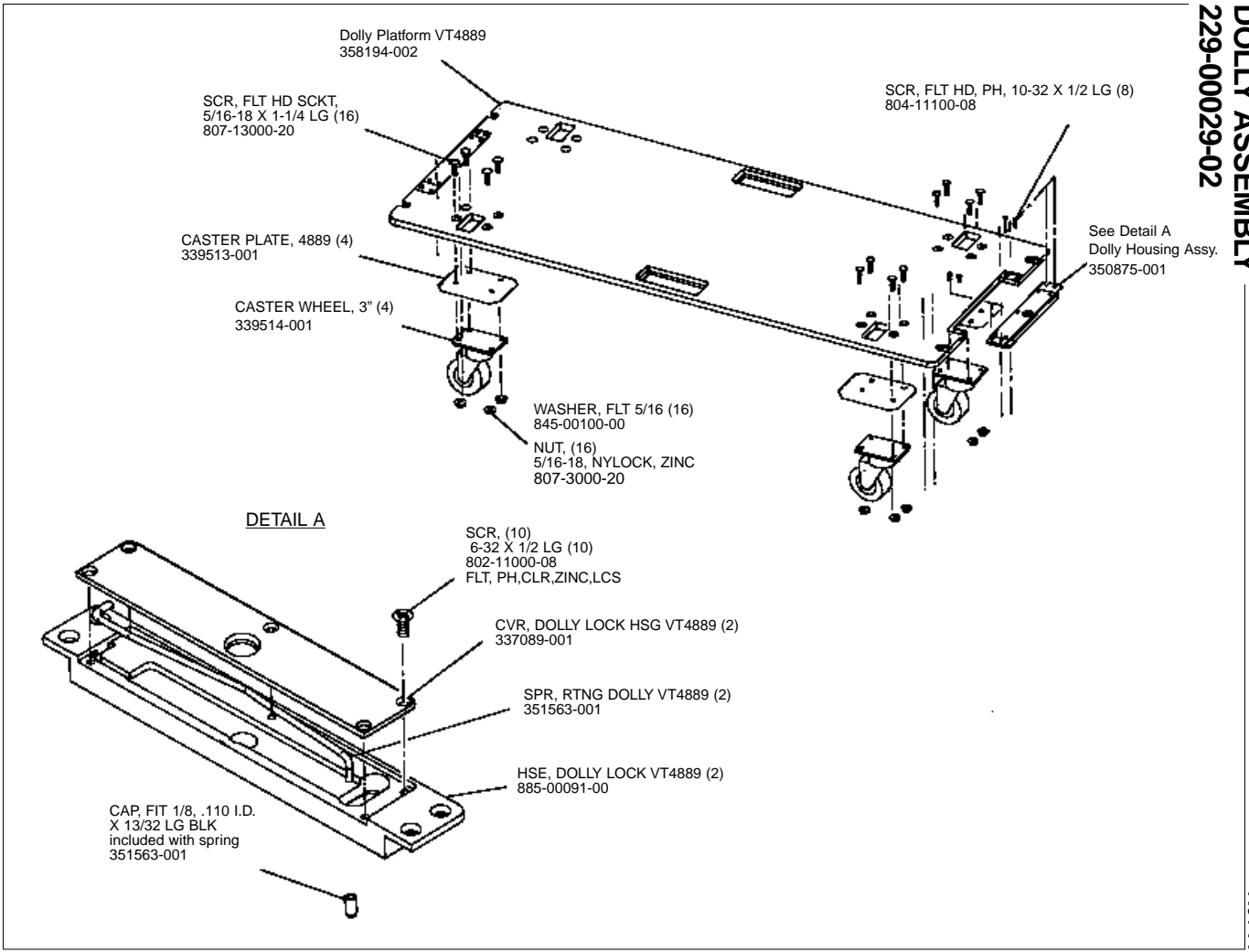
WIRING DIAGRAM



VT4880 REV AF

COMPONENT EXPLODED VIEW

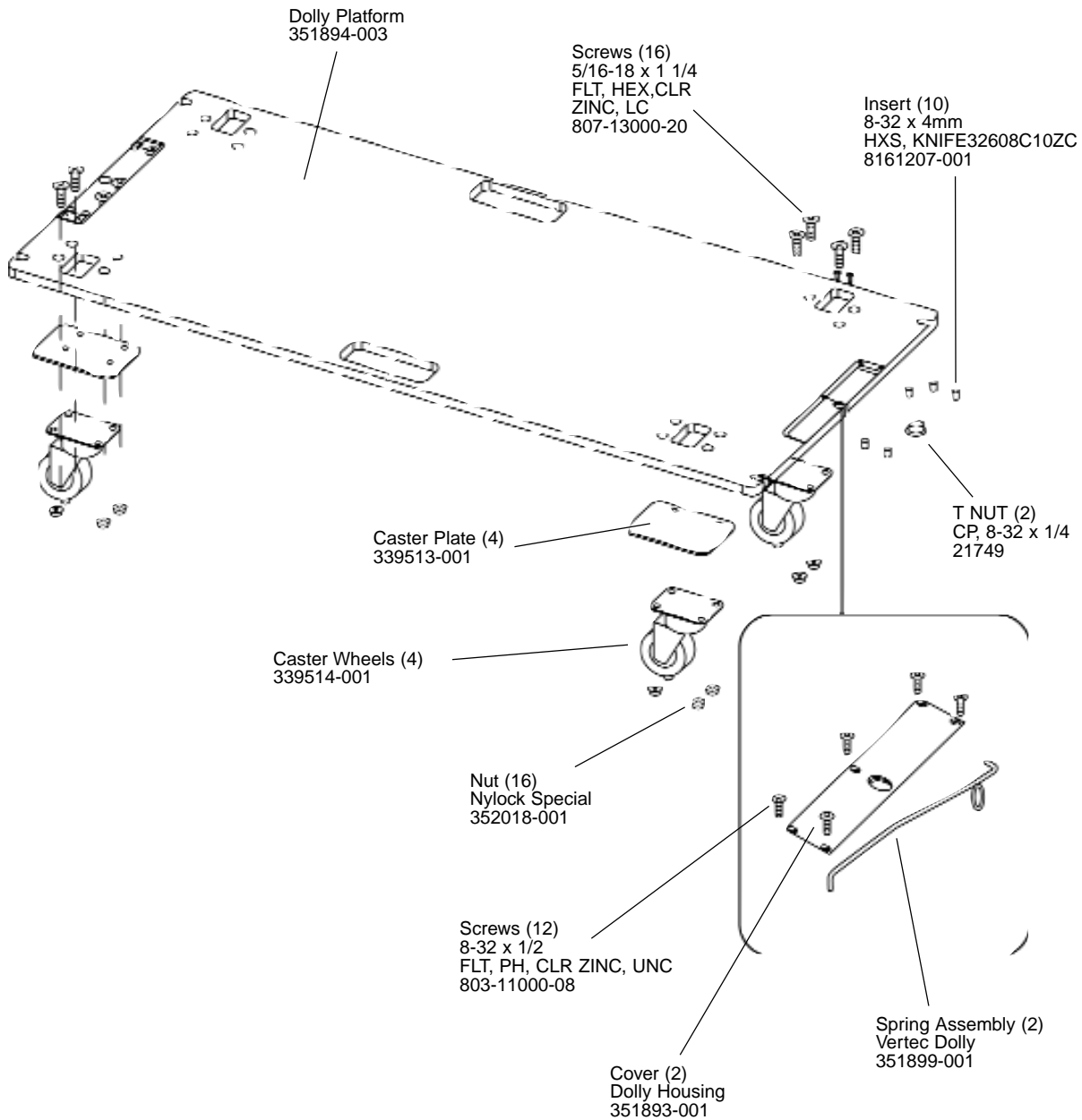




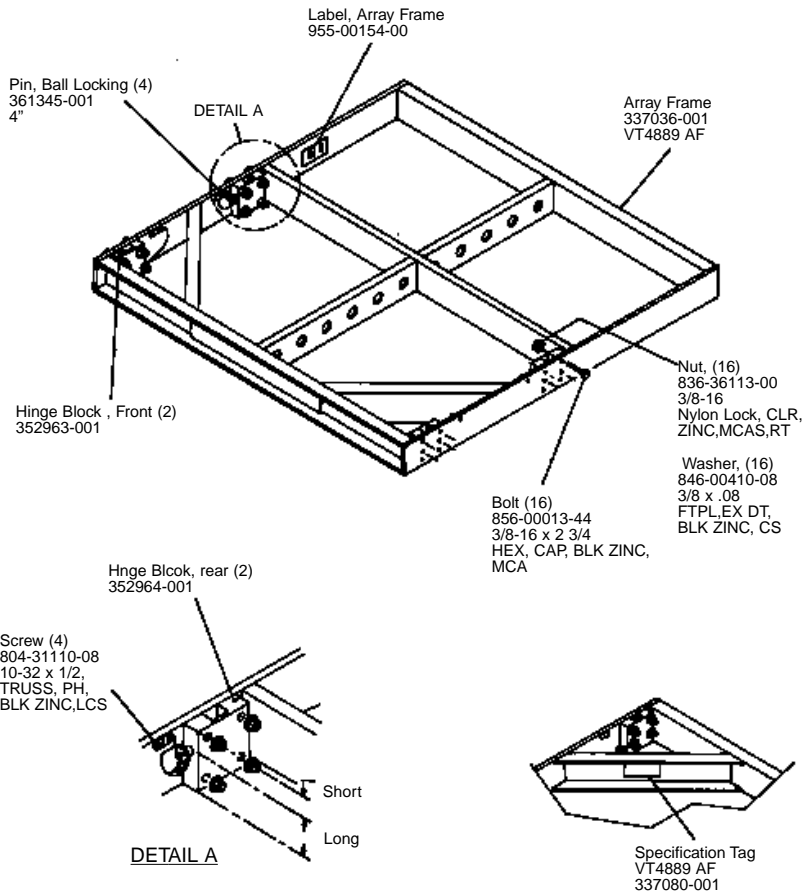
JBL VT4880/ACC

REV B

DOLLY ASSEMBLY 339510-002



JBL VT4880/ACC



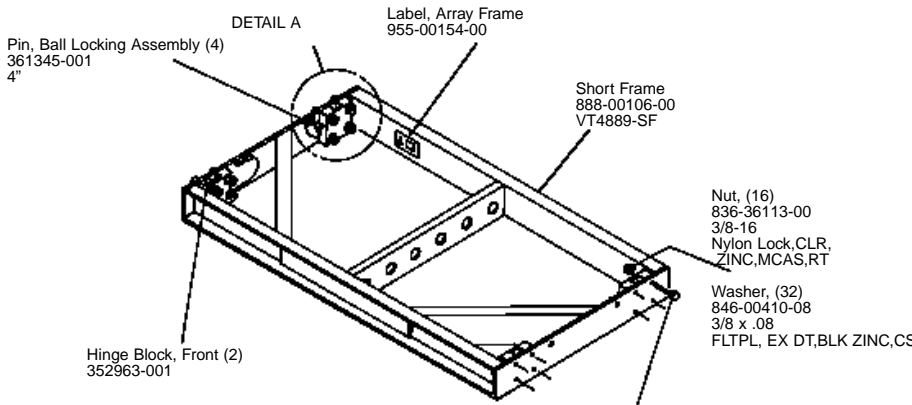
VT4889-AF (Array Frame)

The VT4889-AF array suspension frame is crafted of 6061 Grade heat-treated aluminum. It includes 11 (eleven) attachment holes for fitting 6.5-ton shackles. Each of these holes is fitted with a bronze bushing for longer life. These holes are set on approximately 102mm (4") centers. Each hole has an I.D. (Inner Diameter) of 25.4mm (1").

The frame includes four receiver blocks, designed to attach Hinge Bars from the VT4889 enclosures. These blocks are made of 7075 Grade aluminum. They are coupled with Grade 8 bolts, and the attached steel quick release pins are secured with stainless steel restraining lanyards.

The VT4889-AF weighs 45 kilograms (100 lbs.) It measures approximately 1257mm x 1129mm x 102mm (49.5" x 44.45" x 4").

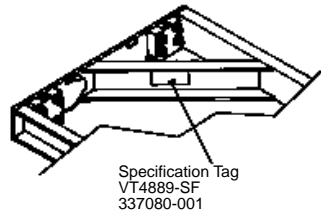
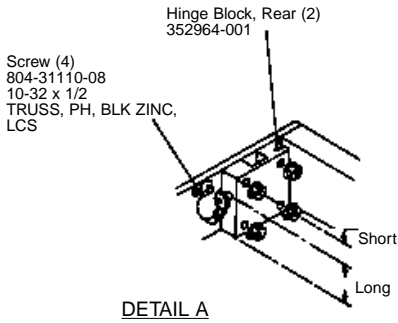
VT4889 Manual
336890-001



VT4889-SF (Short Frame)

Like the larger VT4889-AF, the Short Frame is crafted of 6061 Grade heat-treated aluminum. It includes 6 (six) attachment holes. Each hole is fitted with a bronze bushing for longer life. These holes are set on approximately 102mm (4") centers. Each hole has an I.D. (Inner Diameter of 25.4mm (1"). The frame includes four receiver blocks, designed to attach Hinge Bars from the VT4889 enclosures. These blocks are made of 7075 Grade aluminum. They are coupled with Grade 8 bolts, and the attached steel quick release pins are secured with stainless steel restraining lanyards.

The VT4889-SF weighs only 23.6 kilograms (52 lbs.). It measures approximately 1257mm x 660mm x 102mm (49.5" x 26" x 4").



VT4889 Manual
336890-001