



RELAY G30

Pilot's Handbook

Manuel de pilotage

Pilotenhandbuch

Pilotenhandboek

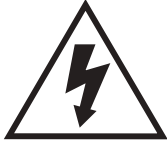
Manual del Piloto

取扱説明書

Manual do Piloto

See www.line6.com/manuals for Advance Guide

Important Safety Instructions



CAUTION
RISK OF ELECTRIC SHOCK DO NOT OPEN



WARNING : TO REDUCE THE RISK OF FIRE OR ELECTRIC SHOCK, DO NOT REMOVE SCREWS. NO USER-SERVICEABLE PARTS INSIDE.
REFER SERVICING TO QUALIFIED SERVICE PERSONNEL.

WARNING : TO REDUCE THE RISK OF FIRE OR ELECTRIC SHOCK, DO NOT EXPOSE THE APPLIANCE TO RAIN OR MOISTURE.

CERTIFICATION

THIS DEVICE COMPLIES WITH PART 15 OF THE FCC RULES. OPERATION IS SUBJECT TO THE FOLLOWING TWO CONDITIONS: (1) THIS DEVICE MAY NOT CAUSE HARMFUL INTERFERENCE, AND (2) THIS DEVICE MUST ACCEPT ANY INTERFERENCE RECEIVED, INCLUDING INTERFERENCE THAT MAY CAUSE UNDESIRE OPERATION.

Warning: Changes or modifications not expressly approved in writing by Line 6 may void the users authority to operate this equipment.

RF Exposure Statement: This transmitter must not be co-located or operated in conjunction with any other antenna or transmitter.

Note: This equipment has been tested and found to comply with the limits for a Class B digital device, pursuant to part 15 of the FCC Rules. These limits are designed to provide reasonable protection against harmful interference in a residential installation. This equipment generates, uses and can radi-ate radio frequency energy and, if not in-stalled and used in accordance with the instructions, may cause harmful interference to radio communications. However, there is no guarantee that interference will not occur in a particular installation. If this equipment does cause harmful interference to radio or television reception, which can be determined by turning the equipment off and on, the user is encouraged to try to correct the interference by one or more of the following measures:

- Reorient or relocate the receiving antenna.
- Increase the separation between the equipment and receiver.
- Connect the equipment into an outlet on a circuit different from that to which the receiver is connected.
- Consult the dealer or an experienced radio/TV technician for help.

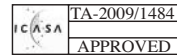
This Class B digital apparatus complies with Canadian ICES-003. This Category II radiocommunication device complies with Industry Canada Standard RSS-310.
Cet appareil numerique de la classe B est conforme a la norme NMB-003 du Canada. Ce dispositif de radiocommunication de catégorie II respecte la norme CNR-310 d'Industrie Canada



You should read these Important Safety Instructions. Keep these instructions in a safe place



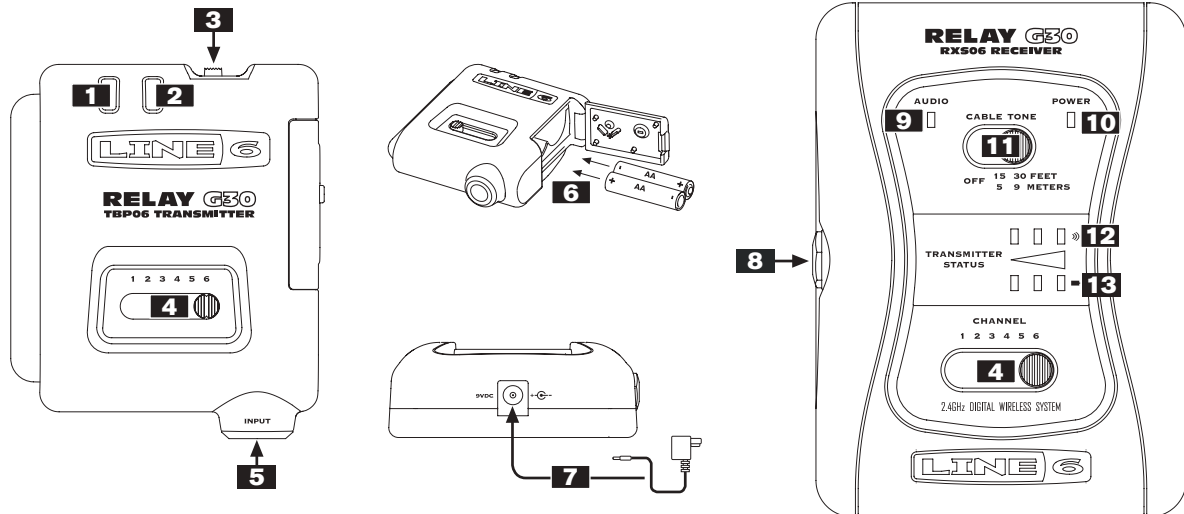
- Read these instructions.
- Keep these instructions.
- Heed all warnings.
- Follow all instructions.
- Do not use this apparatus near water.
- Clean only with dry cloth.
- Do not block any ventilation openings. Install in accordance with the manufacturer's instructions.
- Do not install near any heat sources such as radiators, heat registers, stoves, or other apparatus (including amplifiers) that produce heat.
- This apparatus shall be connected to a MAINS socket outlet with a protective earthing connection.
- Do not defeat the safety purpose of the polarized or grounding-type plug. A polarized plug has two blades with one wider than the other. A grounding type plug has two blades and a third grounding prong. The wide blade or the third prong are provided for your safety. If the provided plug does not fit into your outlet, consult an electrician for replacement of the obsolete outlet.
- Protect the power cord from being walked on or pinched particularly at plugs, convenience receptacles, and the point where they exit from the apparatus.
- Only use attachments/accessories specified by the manufacturer.
- Use only with the cart, stand, tripod, bracket, or table specified by the manufacturer, or sold with the apparatus. When a cart is used, use caution when moving the cart/apparatus combination to avoid injury from tip-over.
- Unplug this apparatus during lightning storms or when unused for long periods of time.
- Refer all servicing to qualified service personnel. Servicing is required when the apparatus has been damaged in any way, such as power-supply cord or plug is damaged, liquid has been spilled or objects have fallen into the apparatus, the apparatus has been exposed to rain or moisture, does not operate normally, or has been dropped.
- The apparatus shall not be exposed to dripping or splashing and that no objects filled with liquids, such as vases, shall be placed on the apparatus.
- **WARNING:** To reduce the risk of fire or electric shock do not expose this apparatus to rain or moisture.
- The appliance coupler is used as the disconnect device, the disconnect device shall remain readily operable.
- Connect only to AC power outlets rated: 100/120V 220/240V 50/60Hz (depending on the voltage range of the included power supply).
- Prolonged listening at high volume levels may cause irreparable hearing loss and/or damage. Always be sure to practice "safe listening."
- Service is required when the apparatus has been damaged in any way, such as:
 - power-supply cord or plug is damaged.
 - liquid has been spilled or objects have fallen into the apparatus.
 - the unit has been exposed to rain or moisture.
 - the unit is dropped or the enclosure is damaged.
 - the unit does not operate normally or changes in performance in a significant way.



Line 6, Inc.:
26580 Agoura Road,
Calabasas, CA 91302-1921 USA

The POD, Clifton House, Butler's Leap
Rugby, Warwickshire, United Kingdom, CV 21 3RQ

BASIC OPERATION



1. Audio LED - Green LED = Audio Signal

2. Battery LED

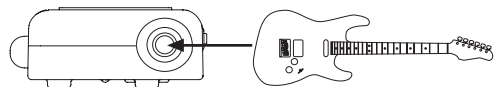
- Blue LED = Full Charge
- Solid Red LED = Low Charge
- Flashing Red LED = Very Low Charge

3. Power - Slide switch to turn on/off transmitter.

4. Channel Select - Align transmitter and receiver channels.



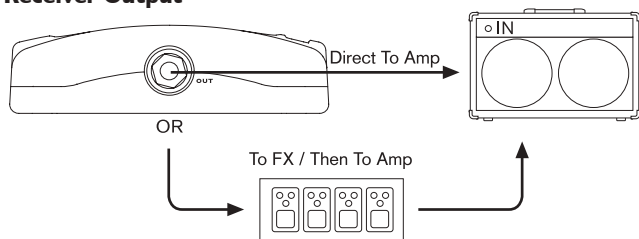
5. Input



6. Battery Installation - Open the side door to access the battery compartment. The inside of the battery compartment door indicates the correct battery direction. For best results use only non-rechargeable alkaline batteries.

7. Power Supply - To turn on the receiver, plug the Line 6 DC-1 power supply into the receiver's 9V DC input jack.

8. Receiver Output -



9. Audio LED - Green = Audio signal is present

10. Power LED - Blue = Power On

11. Cable Tone - Adjust Cable Tone to desired effect: Longer length value = darker tone

12. Transmitter Signal Level Indicators

- 3 Green = Data excellent, interference low
- 2 Green = Data OK, may have some interference
- 1 Green = Data minimal, may have significant interference
- No LED = No data, no interference
- 1 Red = No data, some interference
- 2 Red = No data, more interference
- 3 Red = No data, high interference

13. Transmitter Battery Level Indicators

- 3 Green = Full charge
- 2 Green = Excellent charge
- 1 Green = OK charge
- 1 Red = Low charge
- Flashing Red = Very low charge

REGISTER AND GET FREE STUFF

Included with the Relay™ G30 is a handy, postage-paid card for you to send back to us to register your purchase. It is very important you either fill that registration card out right now and send it to us in the mail, or register online at www.line6.com/register. That gets you all set up for warranty service in case you should ever have a warranty issue with your product. Registering also qualifies you for contests, special offers and more.

WWW.LINE6.COM/MANUALS

Select Relay™ G30 in our online manual archive to download our online companion manual describing details of the features in your Relay™ G30.