

A close-up photograph of a woman with long dark hair, wearing a blue top and a necklace, singing passionately into a silver and black Shure microphone. The background is a vibrant mix of green and blue stage lights.

SHURE[®]

LEGENDARY
PERFORMANCE[™]

BLX[®] WIRELESS SYSTEMS

**LEGENDARY SOUND.
RIGHT OUT OF THE BOX.**

A large, stylized, semi-transparent number '5' logo is positioned in the bottom right corner of the advertisement.

WIRELESS FREEDOM, MADE SIMPLE.

Making the jump to wireless should be liberating, not challenging. Shure BLX Wireless Systems combine professional quality sound with simple setup and an intuitive interface for performance you can trust right out of the box. Precision built and available in a variety of handheld, lavalier, instrument and headset configurations, it's the most accessible way to own the stage.

SYSTEM COMPONENTS

BLX4, BLX4R and BLX88 Diversity Receivers

- Up to 12 compatible systems per frequency band (region dependent)
- Microprocessor-controlled internal antenna diversity
- One-touch QuickScan frequency selection quickly locates the best frequency
- 1/4" and XLR audio outputs
- Two color audio status indicator LED



BLX4 Wireless Receiver



BLX4R Rack Mount Wireless Receiver

Additional BLX4R features:

- Adjustable output level
- Removable antennas for quick antenna distribution
- LCD display with detailed RF and audio metering
- Rugged metal construction, rack mount hardware included



BLX88 Dual Wireless Receiver

Wireless Transmitters

- Power and battery status LED
- Adjustable gain control
- Quick & easy frequency matching
- 2 AA batteries (included) provide up to 14 hours of continuous use
- 300 feet (91 m) operating range (line of sight)



BLX2 Handheld Transmitter



BLX1 Bodypack Transmitter

VOCAL

For lead and backup vocals.



PG58

CARDIOID | DYNAMIC

Professional-quality microphone capsule for lead and backup vocal performance applications



WITH BLX4 OR BLX88

SM58®

CARDIOID | DYNAMIC

Industry-standard microphone capsule tailored to deliver warm, clear vocal reproduction



WITH BLX4 OR BLX4R

BETA 58A®

SUPERCARDIOID
DYNAMIC

Precision-engineered microphone capsule optimized for lead vocal applications



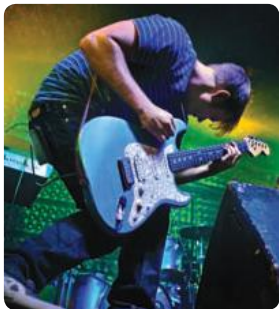
WITH BLX4 OR BLX4R

Optional Accessory:
5 Color ID Caps for handheld transmitter



GUITAR

For guitar or bass.



WA302

GUITAR CABLE

1/4"-to-TA4F instrument cable to connect transmitter to a guitar or bass



WITH BLX4 OR BLX4R

INSTRUMENT

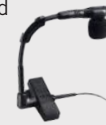
For brass, wind, and percussion instruments.



BETA 98H/C

CARDIOID | CONDENSER

Precision-crafted, flexible gooseneck instrument microphone for brass, woodwind, and percussion applications



WITH BLX4 OR BLX4R

HEADSET

For vocalists, presenters, aerobics instructors and drummers.



PGA31

CARDIOID | CONDENSER

Comfortable, durable head-worn microphone for active performance applications



WITH BLX4, BLX4R OR BLX88

SM31FH

CARDIOID | CONDENSER

Rugged, comfortable head-worn microphone with increased moisture-resistance for active speech and fitness applications



WITH BLX4, BLX4R OR BLX88

SM35

CARDIOID | CONDENSER

Rugged, comfortable head-worn microphone for roadworthy, high-quality live vocal performance applications



WITH BLX4, BLX4R OR BLX88

PRESENTER

For presenters, instructors, teachers and clergy.



CVL

CARDIOID | CONDENSER

Reliable wearable microphone for spoken word applications



WITH BLX4, BLX4R OR BLX88

WL93

OMNIDIRECTIONAL
CONDENSER

Miniature wearable microphone for spoken word applications



WITH BLX4R

WL185

CARDIOID | CONDENSER

Premium wearable microphone optimized for spoken word applications

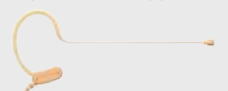


WITH BLX4R

MX153

OMNIDIRECTIONAL
CONDENSER

Premium sub-miniature earset microphone for discrete, exceptional clarity in spoken word applications



WITH BLX4R

BLX2 HANDHELD SYSTEM OPTIONS

Model	Includes
BETA 58A® VOCAL 50Hz – 16kHz	<ul style="list-style-type: none"> • BETA 58A® Handheld Microphone with BLX2 Transmitter • BLX4 or BLX4R Wireless Receiver • Durable Padded Zipper Case • Break-resistant Microphone Clip • 2 AA Batteries

PG58 VOCAL 60Hz – 15kHz	<ul style="list-style-type: none"> • PG58 Handheld Microphone with BLX2 Transmitter • BLX4 or BLX88 Wireless Receiver • Break-resistant Microphone Clip • 2 AA Batteries
--------------------------------------	--

BLX1 BODYPACK SYSTEM OPTIONS

Model	Includes
WA302 GUITAR	<ul style="list-style-type: none"> • WA302 Guitar Cable • BLX1 Bodypack Transmitter with 2 AA Batteries (included) • BLX4 or BLX4R Wireless Receiver • Durable Padded Zipper Case

PGA31 HEADSET 40Hz – 20kHz	<ul style="list-style-type: none"> • PGA31 Headset Microphone • BLX1 Bodypack Transmitter with 2 AA Batteries (included) • BLX4, BLX4R OR BLX88 Wireless Receiver • Windscreen
---	--

WL93 PRESENTER 50Hz – 20kHz	<ul style="list-style-type: none"> • WL93 Lavalier Microphone • BLX1 Bodypack Transmitter with 2 AA Batteries (included) • BLX4R Wireless Receiver • Durable Padded Zipper Case • Tie Clip and Windscreen
--	--

MX153 PRESENTER 20Hz – 20kHz	<ul style="list-style-type: none"> • MX153 Earset Microphone • BLX1 Bodypack Transmitter with 2 AA Batteries (included) • BLX4R Wireless Receiver • Durable Padded Zipper Case • Collar Clip, Windscreen, and Protective Pouch
---	---

Model	Includes
SM58® VOCAL 50Hz – 15kHz	<ul style="list-style-type: none"> • SM58® Handheld Microphone with BLX2 Transmitter • BLX4 or BLX4R Wireless Receiver • Durable Padded Zipper Case • Break-resistant Microphone Clip • 2 AA Batteries

BLX1 BODYPACK SYSTEM OPTIONS

Model	Includes
BETA 98H/C INSTRUMENT 20Hz – 20kHz	<ul style="list-style-type: none"> • BETA 98H/C Instrument Microphone • BLX1 Bodypack Transmitter with 2 AA Batteries (included) • BLX4 or BLX4R Wireless Receiver • Durable Padded Zipper Case

CVL PRESENTER 60Hz – 12kHz	<ul style="list-style-type: none"> • CVL Lavalier Microphone • BLX1 Bodypack Transmitter with 2 AA Batteries (included) • BLX4, BLX4R OR BLX88 Wireless Receiver • Tie Clip and Windscreen
---	--

WL185 PRESENTER 50Hz – 20kHz	<ul style="list-style-type: none"> • WL185 Lavalier Microphone • BLX1 Bodypack Transmitter with 2 AA Batteries (included) • BLX4R Wireless Receiver • Durable Padded Zipper Case • Tie Clip and Windscreen
---	---

SM31FH HEADSET 40Hz – 20kHz	<ul style="list-style-type: none"> • SM31FH Headset Microphone • BLX1 Bodypack Transmitter with 2 AA Batteries (included) • BLX4, BLX4R OR BLX88 Wireless Receiver • Windscreen
--	---

SM35 HEADSET 40Hz – 20kHz	<ul style="list-style-type: none"> • SM35 Headset Microphone • BLX1 Bodypack Transmitter with 2 AA Batteries (included) • BLX4, BLX4R OR BLX88 Wireless Receiver • Windscreen
--	---

TECHNICAL SPECIFICATIONS

Operating Range:
300 ft (91 m) line of sight
(actual range depends on RF signal absorption, reflection and interference)

Available Frequencies:
Between 524–865 MHz
(available frequencies depend on applicable regulations in country where system used)

Audio Range:
50–15,000 Hz
(dependent on microphone type)

Transmitter RF Output Power:
10 mW, typical *(varies by region)*

Audio Output Connector:
XLR and 1/4" (6.3 mm) unbalanced

Maximum Output Level:
-27 dBV (XLR, mic level),
-13 dBV (1/4")

Battery Life:
Up to 14 hours

Dynamic Range:
100 dB A-weighted

System Distortion:
0.5% THD typical
(ref. +/- 38 kHz deviation, 1 kHz tone)

Operating Temperature Range:
-18°C (0°F) – +50°C (122°F)

Power Requirements:
BLX1, BLX2: 2 AA alkaline or rechargeable batteries

BLX4: 12–18 V DC at 150 mA, supplied by external power supply

BLX88: 12–18 V DC at 320 mA, supplied by external power supply



BLX4R: 12–18 V DC at 260 mA, supplied by external power supply

Note: Performance may vary depending on country regulations and operating environment.

Operating Principle

 Dynamic  Condenser

Polar Pattern

 Cardioid  SuperCardioid  OmniDirectional

Frequency Response

 Flat  Tailored

SHURE®
LEGENDARY
PERFORMANCE™

United States, Canada,
Latin America, Caribbean:
Shure Incorporated
5800 West Touhy Avenue
Niles, IL 60714-4608 USA

Phone: +1 847-600-2000
Fax: +1 847-600-1212 (USA)
Fax: +1 847-600-6446
Email: info@shure.com
www.shure.com

Europe, Middle East, Africa:
Shure Europe GmbH
Jakob-Dieffenbacher-Str. 12,
75031 Eppingen, Germany

Phone: +49-7262-92490
Fax: +49-7262-9249114
Email: info@shure.de
www.shure.eu

Asia, Pacific:
Shure Asia Limited
22/F, 625 King's Road
North Point, Island East
Hong Kong

Phone: +852-2893-4290
Fax: +852-2893-4055
Email: info@shure.com.hk
www.shureasia.com

System Specifications

Working Range	91 m (300 ft) Line of Sight Note: Actual range depends on RF signal absorption, reflection and interference.
Audio Frequency Response	50 to 15,000 Hz Note: Dependent on microphone type
Total Harmonic Distortion Ref. ± 33 kHz deviation with 1 kHz tone	0.5%, typical
Dynamic Range	100 dB, A-weighted, typical
Operating Temperature	-18°C (0°F) to 57°C (135°F) Note: Battery characteristics may limit this range.
Polarity	Positive pressure on microphone diaphragm (or positive voltage applied to tip of WA302 phone plug) produces positive voltage on pin 2 (with respect to pin 3 of lowimpedance output) and the tip of the high impedance 1/4-inch output.

NOTE: All Specifications are subject to change. Performance may vary depending on country regulations and operating environment.

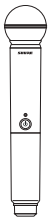
Component Specifications

BLX1 Bodypack Transmitter



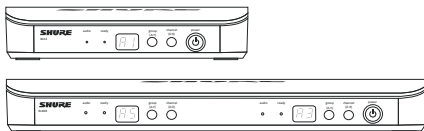
Audio Input Level	gain	max: -16 dBV maximum min (0 dB): +10 dBV maximum
Gain Adjustment Range	26 dB	
Input Impedance	1 M Ω	
RF Transmitter Output	10 mW, typical	varies by region
Dimensions	110 mm x 64 mm x 21 mm (H x W x D)	
Weight	75 g (2.6 oz.),	without batteries
Housing	Molded ABS	
Power Requirements	2 LR6 AA batteries, 1.5 V, alkaline	
Battery Life	up to 14 hours (alkaline)	

BLX2 Handheld Transmitter



Audio Input Level	gain	0dB: -20 dBV maximum -10dB: -10 dBV maximum
Gain Adjustment Range	10 dB	
RF Transmitter Output	10 mW, typical	varies by region
Dimensions	224 mm X 53 mm dia. (8 7/8 X 2 1/8 in.)	
Weight	218 g (7.7 oz.)	(without batteries)
Housing	Molded ABS	
Power Requirements	2 LR6 AA batteries, 1.5 V, alkaline	
Battery Life	up to 14 hours (alkaline)	

BLX4 Wireless Receiver & BLX88 Dual Wireless Receiver



Output Impedance	XLR connector: 200 Ω 6.35 mm (1/4") connector: 50 Ω
Audio Output Level Ref. ± 33 kHz deviation with 1 kHz tone	XLR connector: -27 dBV (into 100 k Ω load) 6.35 mm (1/4") connector: -13 dBV (into 100 k Ω load)
RF Sensitivity	-105 dBm for 12 dB SINAD, typical
Image Rejection	>50 dB, typical
Dimensions	BLX4: 40 mm X 188 mm X 103 mm (H x W x D) BLX88: 40 mm X 388 mm X 116 mm (H x W x D)
Weight	BLX4: 241 g (8.5 oz.) BLX88: 429 g (15.1 oz.)
Housing	Molded ABS
Power Requirements	12-15 V DC @ 160 mA (BLX88, 320 mA), supplied by external power supply (tip positive)

BLX4R Wireless Receiver



Output Impedance	XLR connector: 200 Ω 6.35 mm (1/4") connector: 50 Ω
Audio Output Level Ref. ± 33 kHz deviation with 1 kHz tone	XLR connector: -20.5 dBV (into 100 k Ω load) 6.35 mm (1/4") connector: -13 dBV (into 100 k Ω load)
RF Sensitivity	-105 dBm for 12 dB SINAD, typical
Image Rejection	>50 dB, typical
Dimensions	50 mm X 198 mm X 163 mm H x W x D
Weight	998 g (2.2 lb.) without antennas
Housing	Molded ABS, steel
Power Requirements	12-15 V DC @ 260 mA, supplied by external power supply (tip positive)