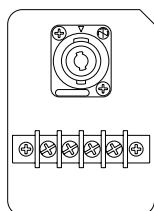




IF2112



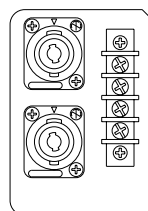
IF2112  
Rear Panel



IF2112AS



IF2112AS  
Rear Panel



IF2112

IF2112M

IF2112AS

*Two-way full-range models with 12-inch woofers deliver extraordinarily well-balanced sound.*

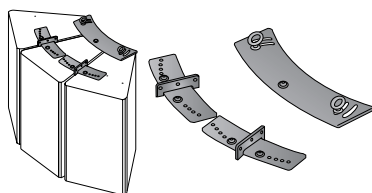
- Sound and phase characteristics matched with all other Installation Series models for optimum performance in any combination.
- 12" woofer specially treated for superior sound and durability.
- 3" high-frequency compression driver with 1.4" exit (IF2112 and IF2112AS) or 1.7" high-frequency compression driver with 1.4" exit (IF2112M).
- Three horn dispersion patterns available for each model: 60° x 40° (/64), 90° x 50° (/95), and 90° x 90° (/99).
- Horn can be rotated 90-degrees for vertical or horizontal mounting.
- Trapezoidal design eliminates interference in array use.
- Switchable between single-amp and bi-amp operation.
- Fifteen 10-mm (M10) screw and four 8-mm (M8) screw suspension points provided for flexible rigging on the IF2112 and IF2112M; 16 10-mm screw (M10) points on the IF2112AS.
- Durable black or white finish (can be painted to match any interior).
- Optional matching array frame and U-bracket available for the IF2112 and IF2112M.
- Optional matching U-bracket available for the IF2112 AS.
- Parallel-wired Neutrik NL4 and barrier strip connectors.

## OPTIONS

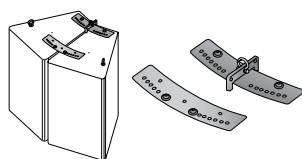
### Accessories

Durable black or white finish as well as Installation series speaker, which can be painted to match any interior.

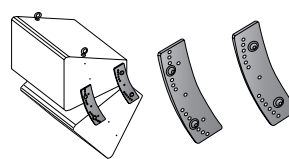
#### Horizontal Array Frame HAF3-2112



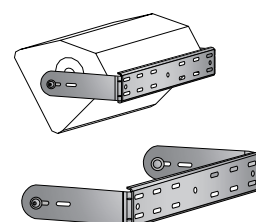
#### Horizontal Array Frame HAF2-2112



#### Vertical Array Frame VAF2-2112



#### U-Brackets UB2112



# Installation Series

## GENERAL SPECIFICATIONS

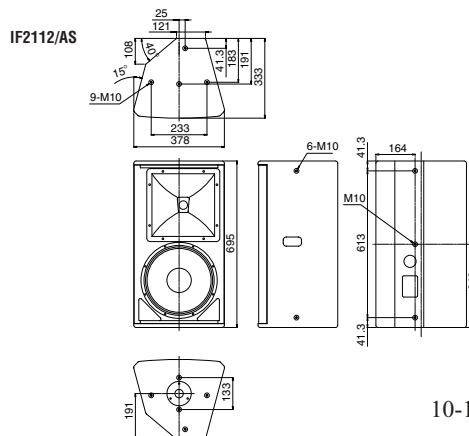
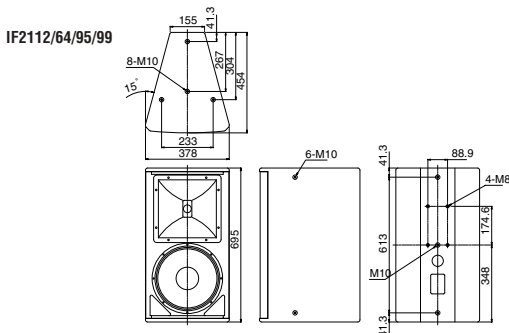
MODEL	IF2112/64(W)		IF2112/95(W)		IF2112/99(W)		IF2112/AS(W)	
Nominal coverage @-6dB (Horizontal x Vertical)	60°x40° rotatable		90°x50° rotatable		90°x90°		60°-100°x60°, rotatable	
Nominal impedance	Passive		8Ω		8Ω		8Ω	
	Bi-amp LF/HF		LF:8Ω, HF:8Ω		LF:8Ω, HF:8Ω		LF:8Ω, HF:8Ω	
Power rating *1	Passive	NOISE	600W		600W		600W	
		PGM	1200W		1200W		1200W	
		MAX	2400W		2400W		2400W	
	Bi-amp LF/HF	NOISE	LF:700W (AES), HF:110W (AES)		LF:700W (AES), HF:110W (AES)		LF:700W (AES), HF:110W (AES)	
		PGM	LF:1400W (AES), HF:220W (AES)		LF:1400W (AES), HF:220W (AES)		LF:1400W (AES), HF:220W (AES)	
		MAX	LF:2800W (AES), HF:440W (AES)		LF:2800W (AES), HF:440W (AES)		LF:2800W (AES), HF:440W (AES)	
Recommended amplifier	Passive	T5n, PC9501N, XP7000						
	Bi-amp LF/HF	LF:T5n, PC9501N, HF:XP1000, PC2001N*						
Sensitivity (SPL, 1W, 1m)	Passive	96dB SPL						
	Bi-amp LF/HF	LF	110dB SPL		HF	108dB SPL		108dB SPL
Continuous SPL (calculated)	Passive	124dB SPL						
	Bi-amp LF/HF	LF	130dB SPL		HF	128dB SPL		128dB SPL
Peak SPL (calculated)	Passive	130dB SPL						
	Bi-amp LF/HF	LF	136dB SPL		HF	134dB SPL		134dB SPL
Components	LF	12" woofer, 4" voice coil						
	HF	Rotatable constant directivity horn, 1/4" exit, 3" diaphragm compression driver						
Frequency range (-10dB) <sup>2</sup>	50 Hz-20k Hz							
Connectors	1x NL4 and barrier strip, wired in parallel				2x NL4 and barrier strip, wired in parallel			
Shape	30 degrees trapezoidal				Multi-angle wedge			
Dimensions (W x H x D)	378 x 695 x 454 (14.9" x 27.4" x 17.9")				378 x 695 x 333 (14.9" x 27.4" x 13.1")			
Weight	31.0kg (68.0lbs)				29.0kg (64lbs)			
Flying hardware	15 x M10, 4 x M8				16x M10			
Optional accessories	UB2112(W), HAF2-2112(W), HAF3-2112(W), VAF2-2112(W)				UB2112(W)			
3rd Party Accessory	Omnimount (US)	-		120.0 series		-		-
	Multimount (US, Allen products)	-		120 series		-		-
	Powerdrive (UK)	-		120 series		-		-
	Ohashi (Japan)	-		-		-		-

\*1 2hrs, IEC \*2 Bi-amp mode, Yamaha recommended DSP configuration \*3 1ch for 2 (Parallel)

MODEL	IF2112M/64(W)		IF2112M/95(W)		IF2112M/99(W)	
Nominal coverage @-6dB (Horizontal x Vertical)	60°x40° rotatable		90°x50° rotatable		90°x90°	
Nominal impedance	Passive		8Ω		8Ω	
	Bi-amp LF/HF		LF:8Ω, HF:8Ω		LF:8Ω, HF:8Ω	
Power rating *1	Passive	NOISE	350W		350W	
		PGM	700W		700W	
		MAX	1400W		1400W	
	Bi-amp LF/HF	NOISE	LF:400W (AES), HF:60W (AES)		LF:400W (AES), HF:60W (AES)	
		PGM	LF:800W (AES), HF:120W (AES)		LF:800W (AES), HF:120W (AES)	
		MAX	LF:1600W (AES), HF:240W (AES)		LF:1600W (AES), HF:240W (AES)	
Recommended amplifier	Passive	T3n, PC6501N, XP7000				
	Bi-amp LF/HF	LF:T3n, PC6501N, XP7000, HF:XP1000, PC2001N*				
Sensitivity (SPL, 1W, 1m)	Passive	95dB SPL				
	Bi-amp LF/HF	LF	110dB SPL		HF	108dB SPL
Continuous SPL (calculated)	Passive	120dB SPL				
	Bi-amp LF/HF	LF	128dB SPL		HF	126dB SPL
Peak SPL (calculated)	Passive	126dB SPL				
	Bi-amp LF/HF	LF	134dB SPL		HF	132dB SPL
Components	LF	12" woofer, 3" voice coil				
	HF	Rotatable constant directivity horn, 1/4" exit, 1.7" voice coil compression driver				
Frequency range (-10dB) <sup>2</sup>	55 Hz-20k Hz					
Connectors	1x NL4 and barrier strip, wired in parallel					
Shape	30 degrees trapezoidal					
Dimensions (W x H x D)	378 x 695 x 454 (14.9" x 27.4" x 17.9")					
Weight	28.0kg (61.0lbs)					
Flying hardware	15 x M10, 4 x M8					
Optional accessories	UB2112(W), HAF2-2112(W), HAF3-2112(W), VAF2-2112(W)					
3rd Party Accessory	Omnimount (US)	-		120.0 series		-
	Multimount (US, Allen products)	-		120 series		-
	Powerdrive (UK)	-		120 series		-
	Ohashi (Japan)	-		-		-

\*1 2hrs, IEC \*2 Bi-amp mode, Yamaha recommended DSP configuration \*3 1ch for 2 (Parallel)

## DIMENSIONS



unit : mm

• Specifications and appearance are subject to change without notice.

**YAMAHA CORPORATION**  
 10-1 Nakazawa-cho, Naka-ku, Hamamatsu Japan  
[www.yamahaproaudio.com](http://www.yamahaproaudio.com)